

Edit, Adapt, Evolve

Artists that Alter Reality

ROSL ARTS and Liberty Gallery

29 May – 19 August 2018

10am – 5pm daily (staffed Mon-Fri)

ROSL ARTS is excited to work with Liberty Gallery on an exhibition presenting the work of artists who *Edit, Adapt, Evolve* from reality.

All the artists exhibiting take inspiration from what exists around them, be it everyday items, nature, architecture, or universally recognised imagery. The artwork is uncanny with a familiarity that invites a second glance from the viewer as they recognise an element from the everyday in this new work of art.

Exhibiting artists: Frances Bloomfield, Bonnie and Clyde, Magnus Gjoen, Dan Hillier, Louise McNaught, Maria Rivans, Benjamin Thomas Taylor, Lars Tunebo, Joe Webb, and David Wightman.

Edit, Adapt, Evolve is participating in Mayfair Art Weekend from June 29 – 1 July, visit our website for more details about our free events and to RSVP.

For more information visit:

ROSL ARTS

[www.rosl.org.uk /visualarts](http://www.rosl.org.uk/visualarts)

or

Liberty Gallery

www.liberty-gallery.com



For any sale enquiries contact:

roslarts@rosl.org.uk

020 7408 0214 x213

ROSLARTS



Frances Bloomfield
Grand Dialogue Domestique 2
Mixed media
43 x 57 x 10cm

£1250



Frances Bloomfield
Rituel Domestique 15
Mixed media
24 x 36 x 7cm

£490



Frances Bloomfield
Rituel Domestique 16
Mixed media
24 x 36 x 7cm

£490



Frances Bloomfield
Rituel Domestique 17
Mixed media
24 x 36 x 7cm

£490

Please note that many of the artworks in *Edit, Adapt, Evolve* are prints, so if a work on display is sold, further editions may be available. Please don't hesitate to ask.



Frances Bloomfield
Rituel Domestique 18
Mixed media
24 x 36 x 7cm

£490



Frances Bloomfield
Floating 87
Mixed media
24 x 36 x 7cm

£390



Frances Bloomfield
Floating 90
Mixed media
24 x 36 x 7cm

£390



Bonnie and Clyde
This Place
Original Mixed Media Collage
170 x 120cm

£5,995

Please note that many of the artworks in *Edit, Adapt, Evolve* are prints, so if a work on display is sold, further editions may be available. Please don't hesitate to ask.



Bonnie and Clyde

Waiting For The Fun To Begin

Original Mixed Media Collage

170 x 120cm

£5,995



Bonnie and Clyde

Ice Cream Plaza

Archival pigment inks with silkscreen print with glazes

82 x 115cm (framed 92 x 125cm approx)

Signed limited edition of 60

£770

£550 unframed



Bonnie and Clyde

Angels and Liquor

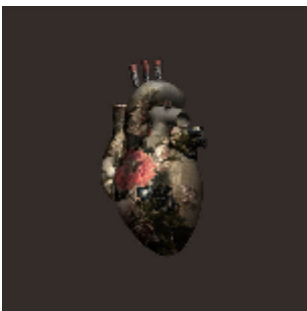
Archival pigment inks with silkscreen and glazes on
Fabriano paper

80 x 115cm (90 x 125cm framed approx)

Signed limited edition of 60

£870

£650 unframed



Magnus Gjoen

Amoris Laetitia (The Joy of Love)

Archival pigment inks on 308 gsm cotton rag paper

50 x 50cm (framed 60 x 60cm approx)

Limited edition of 80

£485

Please note that many of the artworks in *Edit, Adapt, Evolve* are prints, so if a work on display is sold, further editions may be available. Please don't hesitate to ask.



Magnus Gjoen

It's Always Darkest Before Dawn (Gold)

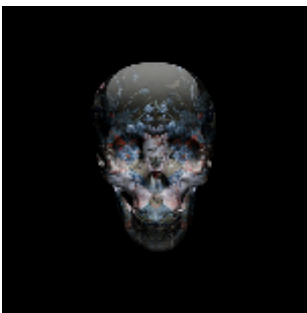
Archival pigment inks with 24k gold leaf on 308 gsm cotton rag paper

60 x 60cm (framed 70 x 70cm approx)

Limited Edition of 60

£650

£450 unframed



Magnus Gjoen

I Thought We'd Only Meet In Death

Archival pigment inks and silk screen varnish on 305 gsm cotton rag paper

70 x 70cm

Limited edition of 80

£900

£700 unframed



Magnus Gjoen

Maharajah and Maharani

Archival Pigment Inks on 308 GSM Cotton Rag Paper

30 x 60cm (framed 40 x 70 cm)

Limited edition of 80

£450

£300 unframed



Magnus Gjoen

The Colonials

Archival Pigment Inks on 308 GSM Cotton Rag Paper

30 x 60cm (framed 40 x 70 cm)

Limited edition of 80

£450

£300 unframed

Please note that many of the artworks in *Edit, Adapt, Evolve* are prints, so if a work on display is sold, further editions may be available. Please don't hesitate to ask.



Dan Hillier

Requiem

Hand-pulled screen print on 300gsm Somerset soft-white smooth paper

56 x 76cm (framed 66 x 86cm approx)

Signed Limited Edition of 100

£445

£275 unframed



Dan Hillier

Raven

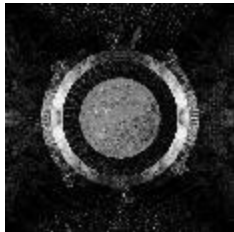
Hand-pulled screen print on 300gsm Somerset soft-white smooth paper

56 x 56cm (framed 66 x 66cm approx)

Signed Limited Edition of 150

£445

£275 unframed



Dan Hillier

Moon Language

Hand-pulled screen print on 300gsm Somerset soft-white smooth paper

76 x 76cm (framed 86 x 86cm approx)

Signed Limited Edition of 100

£520

£320 unframed



Dan Hillier

Luna

Hand-pulled 14 colour screen print

75 x 55cm (framed 85 x 65cm approx)

Limited edition of 100

£565

£395 unframed

Please note that many of the artworks in *Edit, Adapt, Evolve* are prints, so if a work on display is sold, further editions may be available. Please don't hesitate to ask.



Louise McNaught

Pandering (AP)

Giclee on Somerset Velvet 330gsm Paper
60 x 60cm (72 x 72cm Framed)
Edition of 3 Artist Proofs

£425

£275 unframed



Louise McNaught

Falling for You

Giclee on Somerset Velvet 330 gsm Paper
60 x 60cm (72 x 72cm Framed)
Limited edition of 50

£395

£250 unframed



Louise McNaught

Infatuation

Giclee on Somerset Velvet 330 gsm Paper
60 x 60cm (72 x 72cm Framed)
Limited edition of 50

£395

£250 unframed



Louise McNaught

Northern Light

Giclee on Somerset Velvet 330 gsm Paper
60 x 60cm (72 x 72cm Framed)
Limited edition of 25

£395

£250 unframed

Please note that many of the artworks in *Edit, Adapt, Evolve* are prints, so if a work on display is sold, further editions may be available. Please don't hesitate to ask.



Maria Rivans

Eve (Hedy Lamarr)

Archival pigment inks and screenprint with foil gold iridescent lilac and varnish on Somerset paper

121 x 87cm (125 x 97cm approx framed)

Limited edition of 60

£1100

£800 unframed



Maria Rivans

Eliza (Gene Tierney)

Archival pigment inks and screenprint with iridescent blue and French glass and high spot varnish on Minuet paper with torn edges

100 x 70cm (110 x 80cm framed)

Limited edition of 50

£690

£490 unframed



Maria Rivans

Florence (Marta Toren)

Archival pigment inks and screen print with sparkly ink and spot varnish

70 x 50cm (80 x 60cm framed approx)

Limited edition of 75

£570

£400 unframed



Maria Rivans

Miss Cordelia (Jean Simmons)

Archival pigment inks and screen print on Minuet paper

70 x 50cm (80 x 60cm framed)

Limited edition of 75

£560

£390 unframed

Please note that many of the artworks in *Edit, Adapt, Evolve* are prints, so if a work on display is sold, further editions may be available. Please don't hesitate to ask.



Benjamin Thomas Taylor

Wish You Were Here

Giclee print on 308gsm Hahnemuhle Museum Etching paper.

60 x 80cm (framed 70 x 90cm)

Limited edition of 25

£535



Benjamin Thomas Taylor

Happiness

Giclee print on 308gsm Hahnemuhle Museum Etching paper.

60 x 80cm (framed 70 x 90cm)

Limited edition of 25

£535

£345 unframed



Benjamin Thomas Taylor

Untitled Landscape

Giclee print on 308gsm Hahnemuhle Museum Etching paper.

80 x 80cm (framed 90 x 90cm approx)

Limited edition of 25

£615

£395 unframed



Benjamin Thomas Taylor

Reunited With Everything You Have Ever Lost

Giclee print on 308gsm Hahnemuhle Museum Etching paper.

80 x 60cm (90 x 70cm framed approx)

Limited edition of 200

£535

£345 unframed

Please note that many of the artworks in *Edit, Adapt, Evolve* are prints, so if a work on display is sold, further editions may be available. Please don't hesitate to ask.



Lars Tunebo

High In New York - LV

Mixed media, archival pigment inks and hand finished print

32 x 30cm (57.5 x 57.5cm framed approx.)

Limited edition of 30

£390



Lars Tunebo

King Of The City

Mixed media hand finished digital print

30 x 30cm (57.5 x 57.5cm framed approx.)

Limited edition of 50

£390



Lars Tunebo

As A Canary

Mixed media hand finished digital print

33.5 x 32.5cm (52.5 x 52.5cm framed approx.)

Limited edition of 50

£390



Lars Tunebo

Having A Ball

Mixed media hand finished digital print

30 x 30cm (52.5 x 52.5cm framed approx.)

Limited edition of 50

£390

Please note that many of the artworks in *Edit, Adapt, Evolve* are prints, so if a work on display is sold, further editions may be available. Please don't hesitate to ask.



Lars Tunebo

Penguins Crossing

Mixed media hand finished digital print
30 x 40cm (42.5 x 52.5cm framed approx.)
Limited edition of 50

£420



Joe Webb

Stirring Up A Storm

Silkscreen print with Diamond Dust on Naturalis Matt
330gsm Paper
50 x 64cm
Limited edition of 25

£465

£295 unframed



Joe Webb

Control Panel

Four colour Silkscreen print on Naturalis Matt 330gsm
Paper
50 x 64cm
Limited edition of 75

£395

£225 unframed



Joe Webb

Super Highway

Four colour Silkscreen print on Naturalis Matt 330gsm
Paper
50 x 64cm
Limited edition of 75

£395

£225 unframed

Please note that many of the artworks in *Edit, Adapt, Evolve* are prints, so if a work on display is sold, further editions may be available. Please don't hesitate to ask.



Joe Webb

Long Shot

Silkscreen inks, Diamond Dust, acrylic on Canvas

100 x 100cm

Limited edition of 5

£2325 unframed



David Wightman

Phaedra ii

Acrylic and collaged wallpaper on canvas

80 x 100cm

£3,850



David Wightman

Cecily ii

Acrylic and collaged wallpaper on canvas

60 x 80cm

£2,200



David Wightman

Persephone II

Archival Inkjet Print on Somerset Satin 330gsm Paper with deckled edges

44 x 52cm

Signed edition of 25

£320

£195 unframed

Please note that many of the artworks in *Edit, Adapt, Evolve* are prints, so if a work on display is sold, further editions may be available. Please don't hesitate to ask.



David Wightman

Ottoline

Archival Inkjet Print on Somerset Satin 330gsm Paper with deckled edges

44cm x 52cm

Signed edition of 25

£320

£195 unframed



David Wightman

Ottoline II

Digital archival print on Somerset satin 330gms paper with a deckle edge

53.5 x 66.5cm

Signed edition of 25

£320

£195 unframed



David Wightman

Persephone

Digital archival print on Somerset satin 330gms paper with a deckle edge

53.5 x 61.4cm

Signed edition of 25

£320

£195 unframed



David Wightman

Beatrix

Digital archival print on Somerset satin 330gsm paper with a deckle edge

44 x 62cm

Signed edition of 25

£320

£195 unframed

Please note that many of the artworks in *Edit, Adapt, Evolve* are prints, so if a work on display is sold, further editions may be available. Please don't hesitate to ask.